



## TEST REPORT

Report Number	17R-1369-00
Name and Address of Client	BANGKOK STEEL INDUSTRY PUBLIC CO., LTD 27 MOO 10, POOCHAOSAMINGPRAI RD., BANGYAPRAEK, PHRAPRADAENG, SAMUTPRAKARN 10130
Product Name	Hot-dip zinc-coated steel sheet and strip, SGCC RCX Z100 NOK-SINGHA, THICK GAUGE
Product Description	-
Sample Details	Details of sample as shown in appendix
Sample Receiving Date	03 Aug 2017
Sample Testing Date	03 -09 Aug 2017
Report Issue Date	09 Aug 2017
Test Location	Japan Electrical Testing Laboratory (Thailand) Co., Ltd. 46/173, Nuanchan Rd., Nuanchan, Bungkum, Bangkok 10230, Thailand
Remark : -	

Prepared by

Signature

(Ms.Rutchaneekorn Poonsranoy)

Chemist

Chemical Laboratory

Authorized by

Signature

(Ms.Waraporn Jansanthea)

Assistant Manager

Chemical Laboratory



**A. TEST RESULTS**

TEST COMPONENTS : Hot-dip zinc-coated steel sheet and strip, SGCC RCX Z100 NOK-SINGHA,  
 THICK GAUGE

TESTING ITEMS	RESULTS
	SUBMITTED SAMPLES
LEAD (Pb) CONTENT: mg/kg	N.D.
CADMIUM (Cd) CONTENT: mg/kg	N.D.
MERCURY (Hg) CONTENT: mg/kg	N.D.
HEXAVALENT CHROMIUM (Cr <sup>6+</sup> ) CONTENT: mg/kg	N.D.

- Remarks :
- Results shown are based on the total weight of dry sample.
  - ppm = part per million = mg/kg
  - N.D. = not detected at the limit of detection (LOD)

*"The test results covered by this report, refer only to the test samples which have been submitted for testing."*

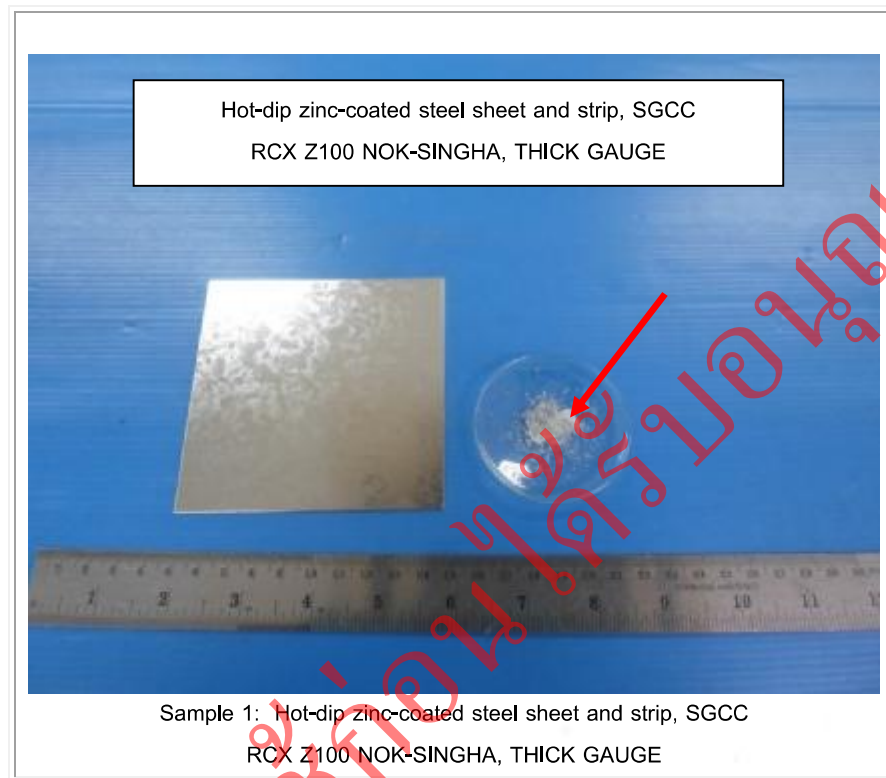
**B. TEST METHOD**

Testing Item	Testing Method	Detection Limit			
		Testing Item	LOD	LOQ	Unit
Mercury	IEC 62321: 2008, edition 1.0, Clause 7 by acid digestion and determined by ICP-OES	Hg	0.22	2.00	mg/kg
Cadmium, Lead	IEC 62321: 2008, edition 1.0, Clause 9 by acid digestion and determined by ICP-OES	Cd	0.22	2.00	mg/kg
		Pb	0.28	2.00	mg/kg
Hexavalent Chromium	IEC 62321: 2008, edition 1.0, annex C, by alkaline digestion and determined by UV-Visible	Cr <sup>6+</sup>	0.07	1.00	mg/kg

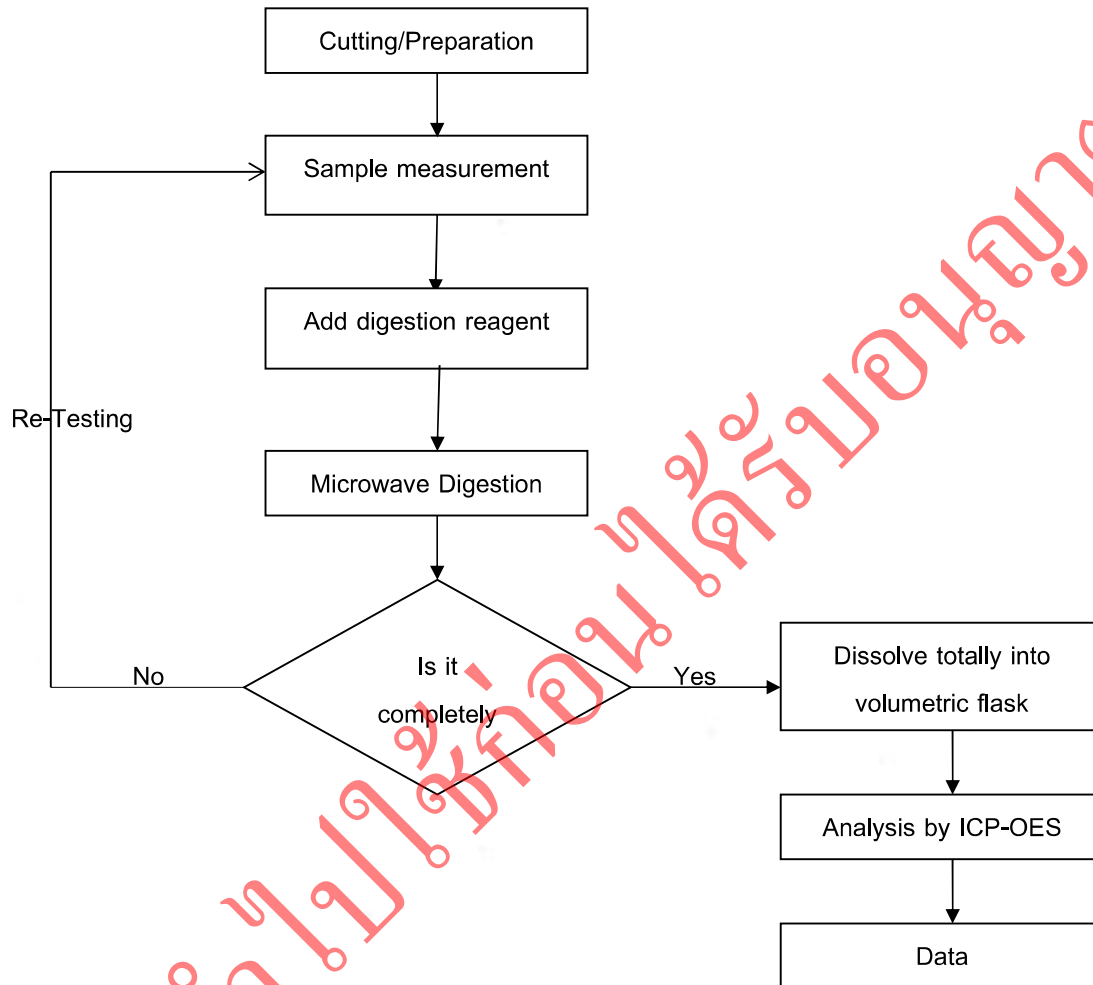
\*\*\*\*\*End of Report\*\*\*\*\*



## APPENDIX



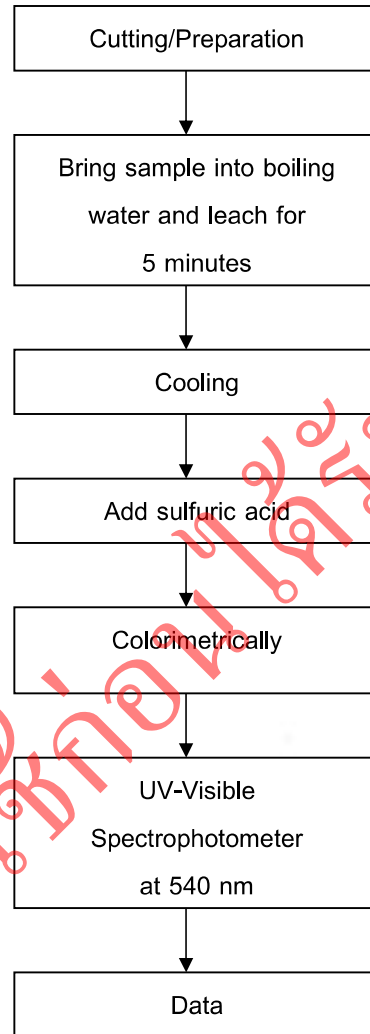
Flow Chart of Cd, Pb, Hg Analysis (Based on IEC 62321)



Remark: The samples were digested completely by pre-conditioning method according to above flow chart.



Flow Chart of Hexavalent Chromium ( $\text{Cr}^{6+}$ ) Analysis (Based on IEC 62321)



Remark: The samples were extracted completely by pre-conditioning method according to above flow chart.

